



# X-Band Transmit Filters (Partial Band)

## Model 19172 Series

These partial band transmit filters isolate the upper portion of the transmit band from the lower portion of the transmit band.

These multi-purpose bandpass filters also provide deep rejection of the receive band (7.25-7.75 GHz) and frequencies above the transmit band.

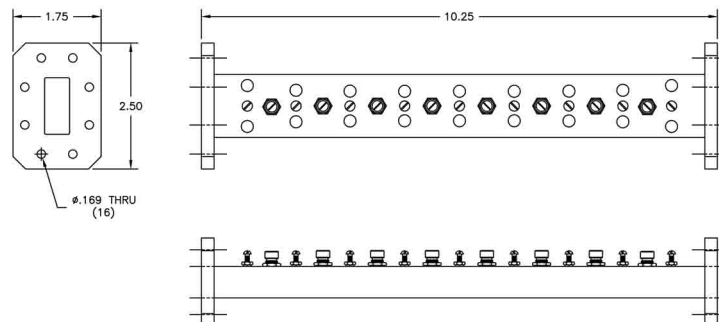


### Specifications:

Passband:	8.25 - 8.4 GHz
Passband Loss:	0.8 dB Max
Passband VSWR:	1.3:1 Max
Passband Ripple:	0.25 dB Max
Passband Power (CW):	200 Watts Max
Passband Delay Variation:	0.6 nS Max over any 18 MHz passband segment
Rejection:	80 dB Min @ 8.05 GHz and 8.7 GHz
Flanges:	See Chart below
Weight:	1.4 lbs (.64Kg)
Dimensions:	10.25" x 2.50" x 1.75" (260mm x 64mm x 44mm)
Finish:	Gray Lacquer
Operating Temperature Range:	-40°C to +60°C

### Flange Configurations

Model #	Input	Output
19172-1	CPR112F	CPR112F
19172-2	WR112 Cover	WR112 Cover



**MICROWAVE FILTER CO., INC.**  
 6743 KINNE STREET, E. SYRACUSE, NY 13057  
 E-Mail: [mfcsales@microwavefilter.com](mailto:mfcsales@microwavefilter.com)

800-448-1666 • 315-438-4700  
 Web: [www.microwavefilter.com](http://www.microwavefilter.com)